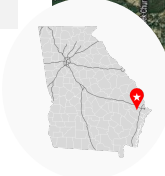
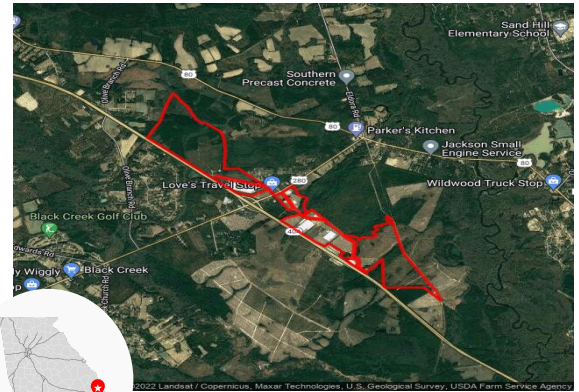


# Interstate Centre

Black Creek, GA 31308, Bryan County



Source: Georgia Power Economic Development



## Property

<b>Total Acres:</b>	1,100 AC	<b>Water on Site:</b>	Yes
<b>Remaining Acres:</b>	458 AC	<b>Water Main Size:</b>	12 IN
<b>Largest Tract:</b>	219 AC	<b>Sewer on Site:</b>	Yes
<b>Sale or Lease:</b>	Both	<b>Sewer Main Size:</b>	8 IN
<b>Zoning:</b>	Industrial	<b>Gas on Site:</b>	Yes
<b>Former Use:</b>	Agricultural	<b>Gas Main Size:</b>	6 IN
<b>GRAD Site:</b>	Yes	<b>Electric Provider:*</b>	Georgia Power

\* Customer will have choice of provider if load is above 900 kW



## Taxes & Incentives

<b>Job Tax Credit:</b>	\$3,500/job
<b>County Millage Rate:</b>	24.889
<b>County Property Tax:</b>	\$9.96 per \$1000 FMV
<b>Total Sales Tax:</b>	8%
<b>County Freeport:<sup>1</sup></b>	1: 100% 2: 100% 3: 100% 4: 100%

### Incentive Zones

- Less Developed Census Tract
- Military Incentive Zone
- Foreign Trade Zone
- New Market Tax Credit

Sources: Georgia Dept. of Revenue, Georgia Dept. of Community Affairs



## Transportation

<b>International Airport:</b>	Savannah/Hilton Head International, 13.2 miles	<b>Port 1:</b>	Port of Savannah, 19.3 miles
<b>Interstate:</b>	I 16, 0 miles	<b>Port 2:</b>	Port of Brunswick, 71.3 miles
<b>Rail Provider:</b>	Not rail served	<b>Inland Port:</b>	Inland Port Dillon, 192.2 miles
		<b>Intermodal:</b>	Savannah, 15.6 miles

Sources: Georgia Dept. of Transportation, Georgia Ports Authority



## Workforce

Laborforce		Unemployment Rate		Average Weekly Wage	
<b>Bryan County:</b>	20,067	<b>Bryan County:</b>	1.9%	<b>Bryan County:</b>	\$753
<b>Draw Area:<sup>2</sup></b>	269,377	<b>Georgia:</b>	2.4%	<b>Draw Area:<sup>2</sup></b>	\$912
		<b>US:</b>	3.7%	<b>Georgia:</b>	\$1,132
				<b>US:</b>	\$1,231

Source: Georgia Dept. of Labor



## Demographics

Population		Median Age		Percent College Degree <sup>3</sup>	
<b>Bryan County:</b>	42,150	<b>Bryan County:</b>	38.1	<b>Bryan County:</b>	46.1%
<b>Draw Area:<sup>2</sup></b>	566,601	<b>Georgia:</b>	36.7	<b>Georgia:</b>	41.2%
		<b>US:</b>	38.1	<b>US:</b>	42.3%

Source: ESRI 2021



## Contacts

**Property Contact:**  
 Anna Chafin  
 Development Authority of Bryan County  
 912-653-4967  
 anna.chafin@bryan-county.org

**For more details, contact your local Georgia Power Community Development Manager:**

Jason Coley  
 Georgia Power Community & Economic Development  
 912-230-6602  
 jfcoley@southernco.com

<sup>1</sup> Level 1 - Business inventory is exempt from state property taxes for the following categories - 1: raw materials, 2: finished goods, 3: finished goods awaiting shipment outside of GA, 4: fulfillment center stock in trade

<sup>2</sup> Includes county and adjoining counties <sup>3</sup> Population 25 and older with an Associates degree or higher  
 This information is provided "as is" without warranty of any kind either express or implied.